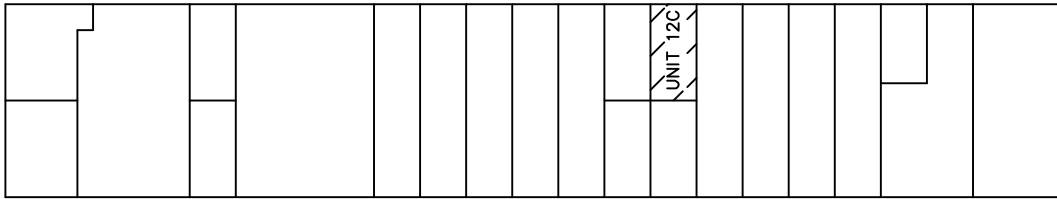


BURNSIDE DRIVE

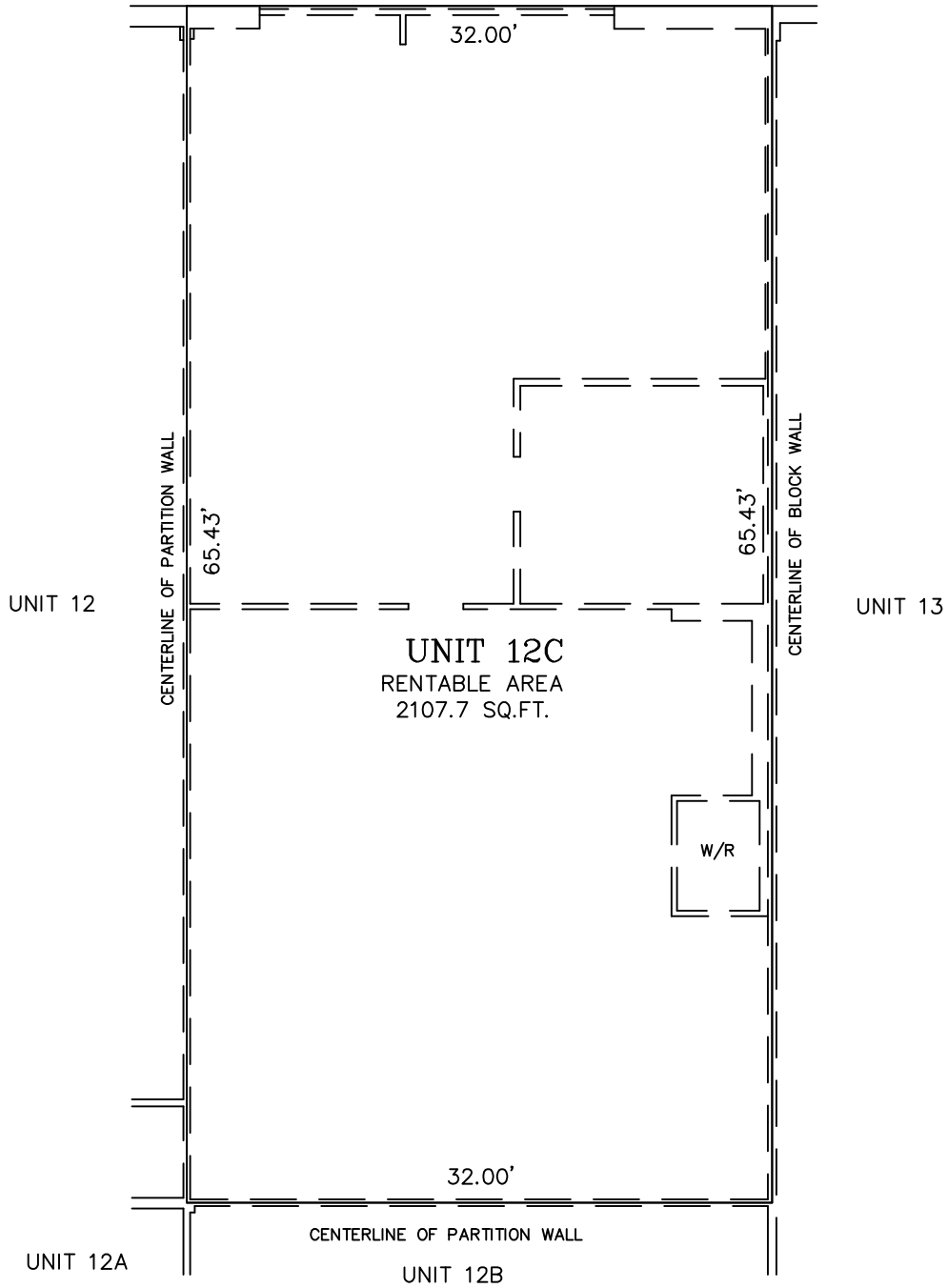


ILSLEY AVE

KEY PLAN (121 ILSLEY AVENUE)

BURNSIDE DRIVE

EXTERIOR OF CONCRETE WALL
DOOR



T E N A N T N A M E

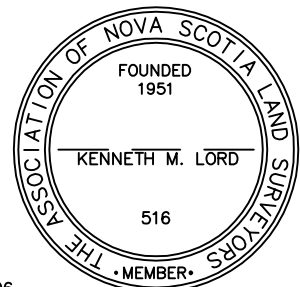
121 ILSLEY AVENUE
DARTMOUTH, NOVA SCOTIA
CRU UNIT 12C

THOMPSON CONN LIMITED
NOVA SCOTIA LAND SURVEYORS
HALIFAX, NOVA SCOTIA
PHONE: 422-4800
FAX: 454-4700
FILE: 13821

SCALE: 1" = 10'

DATE: SEPTEMBER 9, 2009

MEASUREMENTS WERE TAKEN ON : NOVEMBER 30, 2006
AND SEPTEMBER 9, 2009



CERTIFIED CORRECT