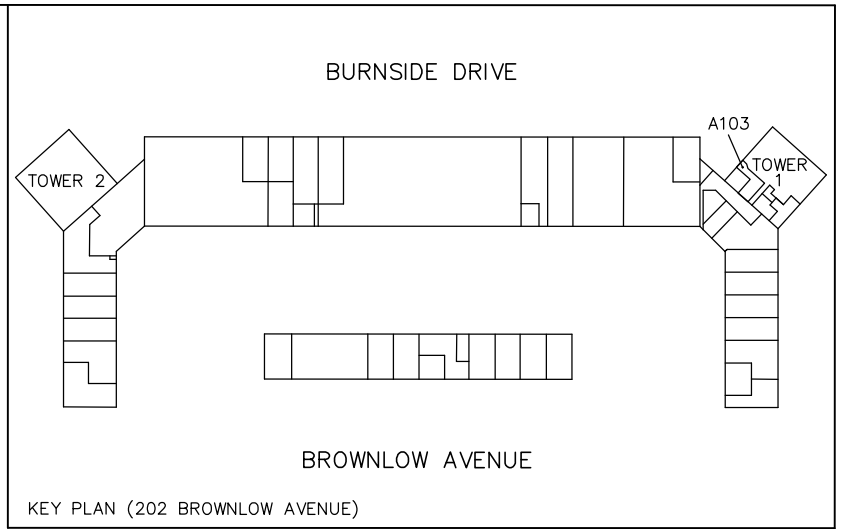
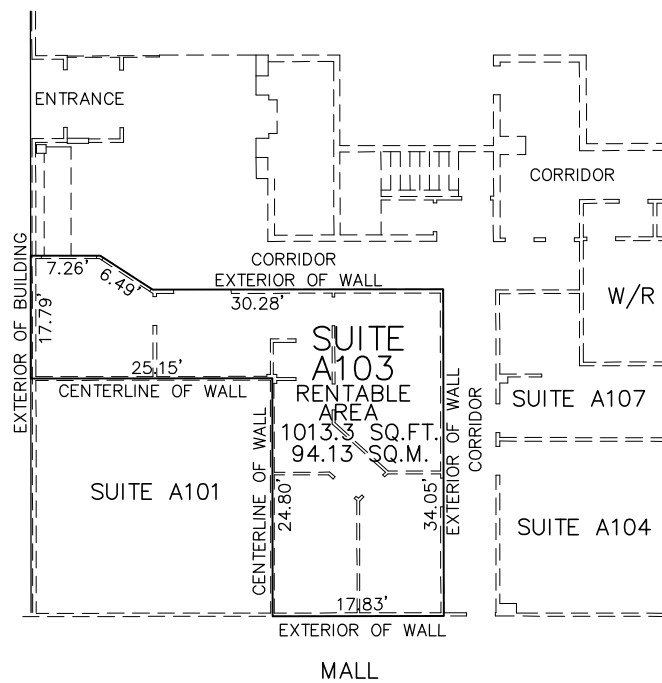

T E N A N T N A M E



BURNSIDE DRIVE



BROWNLOW AVENUE

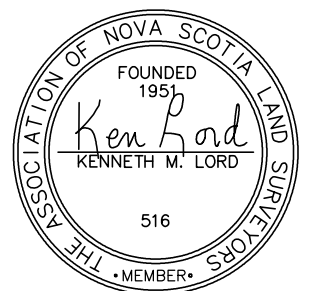
**202 BROWNLOW AVENUE
DARTMOUTH, NOVA SCOTIA
CRU SUITE A103
FIRST FLOOR, TOWER-1**

THOMPSON CONN LIMITED
NOVA SCOTIA LAND SURVEYORS
HALIFAX, NOVA SCOTIA
PHONE: 422-4800
FAX: 454-4700

SCALE: 1" = 20'

DATE: JANUARY 9, 2012

MEASUREMENTS WERE TAKEN ON : FEBRUARY 24, 2011
AUGUST 5, 2011 AND JANUARY 4, 2012



CERTIFIED CORRECT